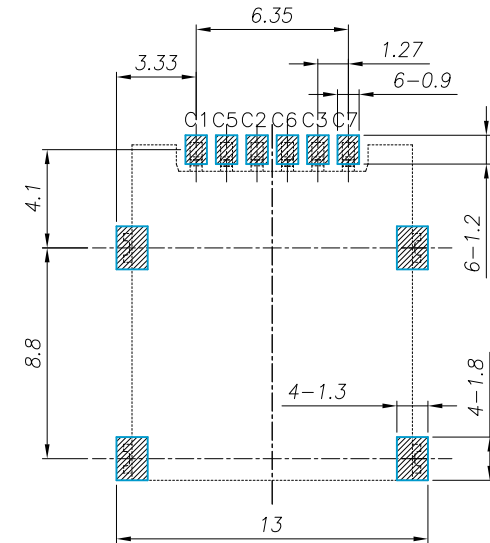
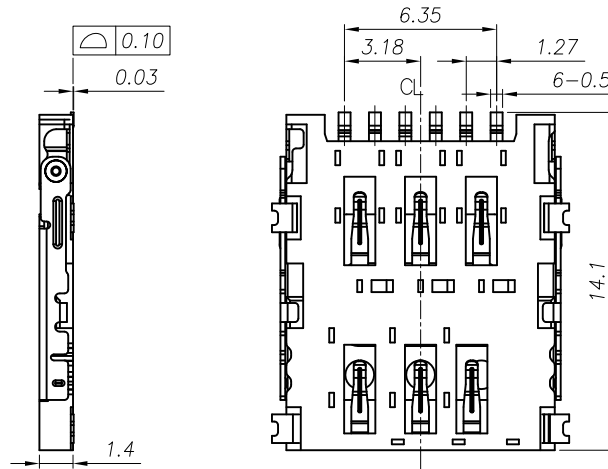
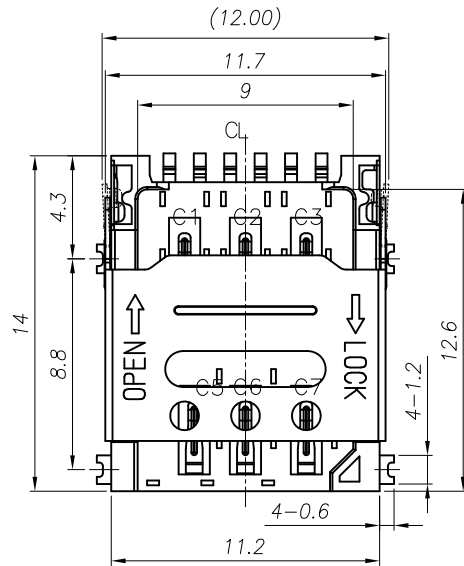
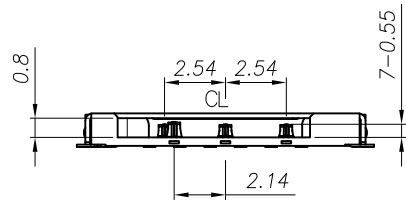


REV.	ECN NO OR DESCRIPTION	REVISED	DATE
▽	PROPOSE ONLY	ALLEN	2016.04.04

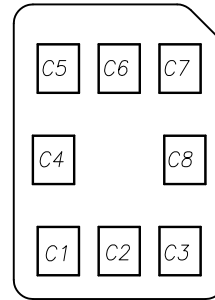


RECOMMENDED PCB LAYOUT TOP VIEW (TOLERANCE:±0.05)  
RECOMMENDED METAL MASK T=0.12MM



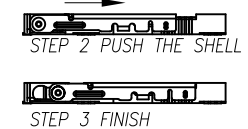
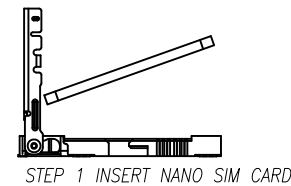
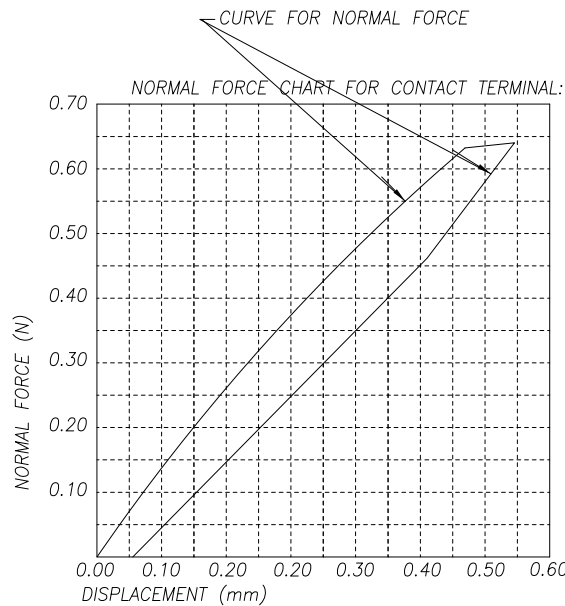
【 SIM Card Pin Assignments 】

PIN	Name
C1	Vcc
C2	RST
C3	CLK
C4	Reserved
C5	GND
C6	Vpp
C7	I/O
C8	Reserved



NOTES:

- MATERIAL:
  - Housing: High Temperature Thermoplastic UL94V-0; Color Black.
  - Terminal: Copper Alloy, T=0.12mm.
  - Shell: Stainless Steel, T=0.20mm.
- FINISH:
  - Terminal: Plated Gold on the Contact Area and Solder Tails
  - Peg: Plated Gold on the Solder Tails.
- SPECIALITY:
  - Rated current: 0.5A
  - Rated voltage: 50V
  - Contact Resistance: 80mΩ MAX
  - Insulation Resistance: 100MΩ MIN 100V DC
  - Dielectric withstanding voltage: 100V AC.
  - Solder ability: 245±5°C, 5±0.5s.
  - Operating condition: Temperature: -30°C ~ +80°C Humidity: 80% R.H MAX



NO.	PART NAME	Q'TY	DESCRIPTION	NOTE
③	TERMINAL	6	C5210-EH, T=0.12	Au 3u" PLATING
②	BASE INSULATOR	1	LCP+GF30%	BLACK
①	SHELL	1	SUS304-H, T=0.15	AU/Ni PLATING

UNLESS OTHERWISE SPECIFIED TOLERANCES

DECIMALS:	ANGLES:
X : ±0.5	X : ±2°
X.X : ±0.20	X.X : ±1°
X.XX : ±0.10	

东莞市讯普电子科技有限公司

TITLE	6Pin 1.4H Hinge Nano SIM CARD CONN.			
DWN	ALLEN	PART NO.	SMN-305	
CHKD	KEVIN	SCALE: 1:1	UNIT: mm	
APVD	ERIC.W	SIZE: A3	SHEET: 10F 1	

CUSTOMER COPY